

US Airways – Interactive Maps

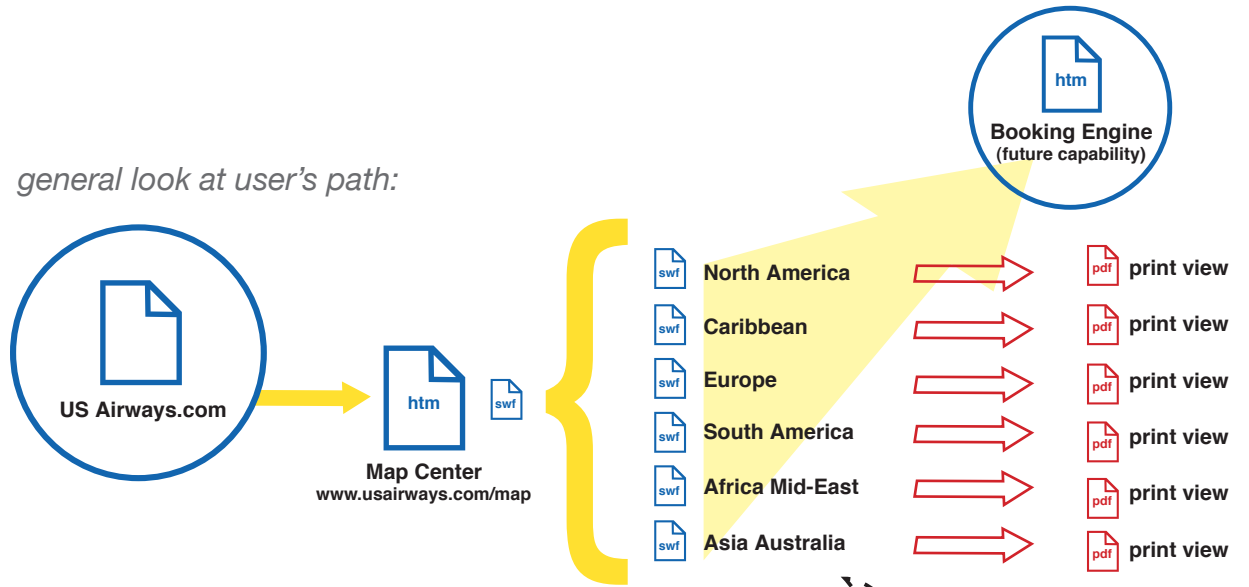
Phase 1 Features:

- more detailed maps
- better usability thru a single interface
- quicker access to all destinations, more flexibility
- easier updates to coordinate with attaché
- ability to zoom
- ability to pan
- high quality print version

Phase 2 Features:

- more information on each destination via single click
- list of direct flight available from selected destination
- list of available links for select destinations
- curve line representing routes visually
- link to booking with passign of limited data for a search query

general look at user's path:



general structure of files and data:

level50

Notice01-NoticeX

Promotional notices (not ads) are shown during load time. Files are selected at random, self unloading and less then 4 secnds in length.

level30

MapNav

Navigation bar at bottom is self contained and persistent. This unloads the current movie and plays the slected map movie on level 0.

level10

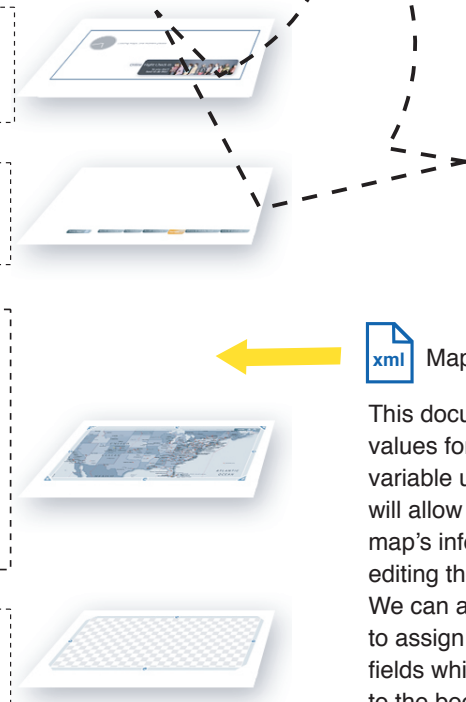
MapNorthAmerica MapSouthAmerica
 MapCaribbean MapAfricaMideast
 MapEurope MapAsiaAustralia

All maps are loaded on level 10. each file calls on a random notice file at load time. the map files pull in dynamic data from an external (xml) document that populates all the variables used in the map. This includes coordinance, airport id, names, destination info, possible links, etc. The external pdf document are also linked from these files.

level0 (_root)

MapShell_full

Promotional notices (not ads) are shown during load time. Files are selected at random, self unloading and less then 4 secnds in length.



MapData

This document keeps all of the values for every destination variable used in the maps. It will allow for updaing of the map's info and links without editing the flash documents. We can also use this document to assign limited number of fields which are thereby passed to the booking engine.